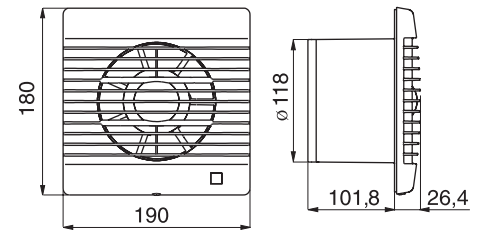
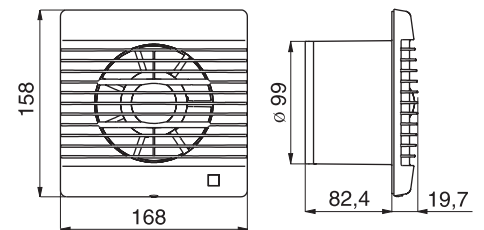




AV 120 C



AV 100 C



Case is made of impact-resistant plastic, white colour. The case is designed to be mounted on a wall.

Impeller is axial, made of impact-resistance plastic.

Motor is of squirrel-cage asynchronous type with shielded pole. The motor is equipped with overload protection. Maximum operating ambient temperature is 40 °C. The motor has friction bearings and has a lifelong grease filling. IP X4 protection.

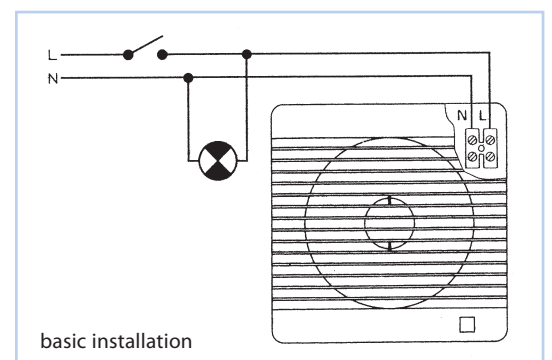
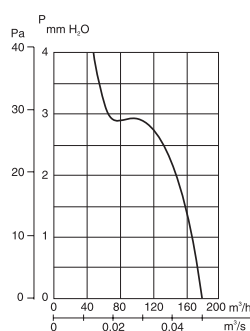
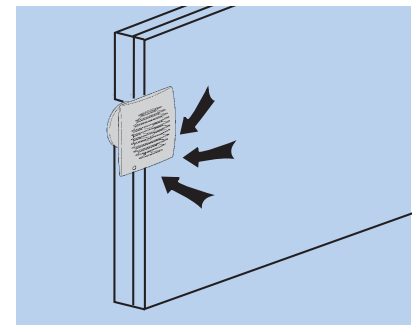
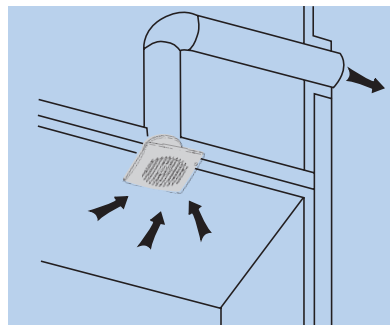
Terminal block is accessible with the fan front grille removed. Connection is through a flush-mount cable.

Speed regulation is by changing voltage with special regulators.

Noise emitted by the fan is measured in a distance 1.5 m in the fan axis on the suction side.

Installation in horizontal and vertical position, considering the service life of bearings, preferentially parallel with the motor axis in horizontal position. Fastening by four screws under the fan grille. Screws and dowels are delivered in package.

Instructions Fans are suitable for short air-ducts with low pressure loss or for exhausting directly through the wall. Fans can be used for ventilation in residential buildings.



Type	Speed [min ⁻¹]	Flowrate (0 Pa) [min ³ /h]	Output [W]	Voltage [V]	Max. temperature [°C]	Pipe Ø [mm]	Sound pressure [dB(A)]	Weight [kg]	Material
AV 120 C	2500	185	20	230	40	125	46	0,80	ABS
AV 100 C	2500	95	13	230	40	100	40	0,44	ABS