

# FLOOR DRAINS, BASEMENT DRAIN, RAIN DRUM

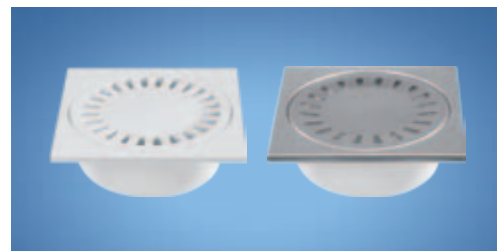
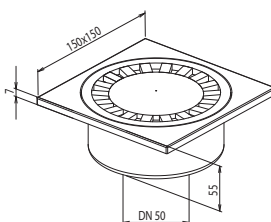


## FLOOR DRAIN

For interior instalations. Vertical outlet DN 50, class K3 (able to withstand loads up to 300 kg).

Type	Order Nr.	Colour	Material	Flow rate
PV DN 50/55 B	501	white	PP	55 l/min
PV DN 50/55 N	502	stainless	PP / Stainless	50 l/min

**Spare parts:** grille, odour stopper.

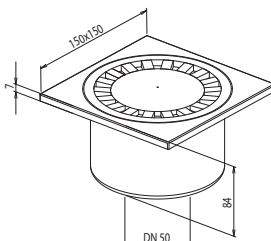


## FLOOR DRAIN

For interior instalations. Vertical outlet DN 50, class K3 (able to withstand loads up to 300 kg).

Type	Order Nr.	Colour	Material	Flow rate
PV DN 50/84 B	503	white	PP	55 l/min
PV DN 50/84 N	504	stainless	PP / Stainless	50 l/min

**Spare parts:** grille, odour stopper.

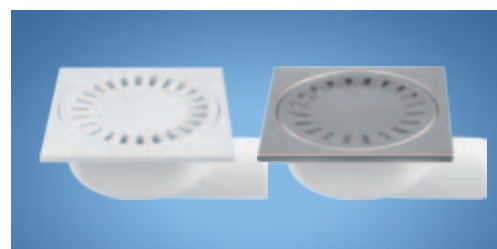
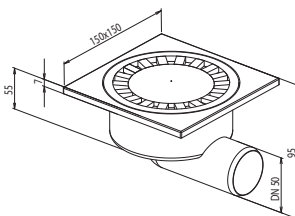


## FLOOR DRAIN

For interior instalations. Horizontal outlet DN 50, class K3 (able to withstand loads up to 300 kg).

Type	Order Nr.	Colour	Material	Flow rate
PV DN 50 B	505	white	PP	55 l/min
PV DN 50 N	506	stainless	PP / Stainless	50 l/min

**Spare parts:** grille, odour stopper.

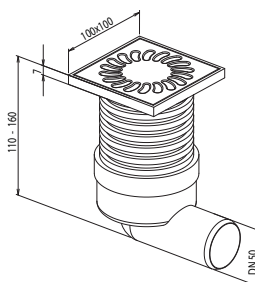


## FLOOR DRAIN

For interior instalations. Top section can be shortened, horizontal outlet DN 50 class K3 (able to withstand loads up to 300 kg).

Type	Order Nr.	Colour	Material	Flow rate
PVB 100x100/DN 50 B	513	white	PP	55 l/min
PVB 100x100/DN 50 N	514	stainless	PP / Stainless	50 l/min

**Spare parts:** grille, odour stopper, adaptor for grille, sealing ring.

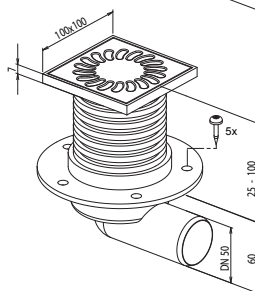


## FLOOR DRAIN

For interior instalations. Pressure sealing flange, class K3 (able to withstand loads up to 300 kg) top section can be shortened, horizontal outlet DN 50.

Type	Order Nr.	Colour	Material	Flow rate
PVB 100x100 PR/DN 50 B	515	white	PP	55 l/min
PVB 100x100 PR/DN 50 N	516	stainless	PP / Stainless	50 l/min

**Spare parts:** grille, odour stopper, adaptor for grille, sealing ring, sealing flange with screws.

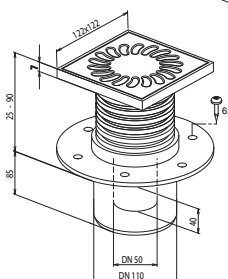


## FLOOR DRAIN

For interior instalations. Pressure sealing flange, class K3 (able to withstand loads up to 300 kg) top section can be shortened, vertical outlet DN 50, DN 110.

Type	Order Nr.	Colour	Material	Flow rate
PVS 122x122/DN 50 N	517	stainless	PP / Stainless	50 l/min
PVS 122x122/DN 110 N	518	stainless	PP / Stainless	50 l/min

**Spare parts:** grille, odour stopper, adaptor for grille, sealing ring, sealing flange with screws.

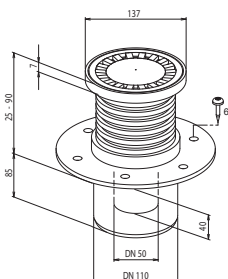


## FLOOR DRAIN

For interior instalations. Pressure sealing flange, class K3 (able to withstand loads up to 300 kg) top section can be shortened, vertical outlet DN 50, DN 110.

Type	Order Nr.	Colour	Material	Flow rate
PVS 110/DN 50 N	519	stainless	PP / Stainless	50 l/min
PVS 110/DN 110 N	520	stainless	PP / Stainless	50 l/min

**Spare parts:** grille, odour stopper, adaptor for grille, sealing ring, sealing flange with screws.



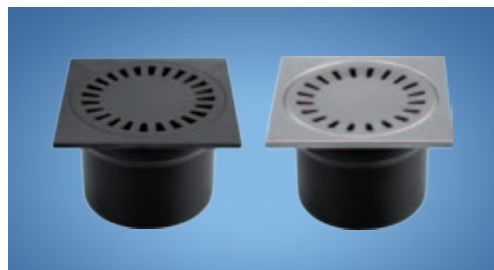
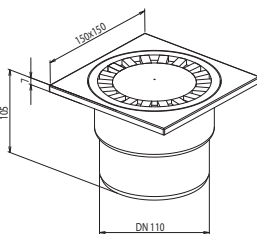
Colour and material of grilles: **WHITE / POLYPROPYLEN, SILVER / INOX**

## FLOOR DRAIN

For interior instalations. Vertical outlet DN 110, class K3 (able to withstand loads up to 300 kg).

Type	Order Nr.	Colour	Material	Flow rate
PVS DN 110 C	508	black	PP	100 l/min
PVS DN 110 N	509	stainless	PP / Stainless	100 l/min

**Spare parts:** grille, odour stopper.

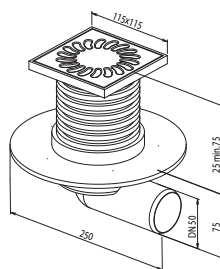


## FLOOR DRAIN — UNIVERSAL

For interior or exterior instalations – contains odour stopper wet (interior) or dry (exterior). Top section can be shortened, horizontal outlet DN 50 includes installation manual, class K3 (able to withstand loads up to 300 kg).

Type	Order Nr.	Colour	Material	Flow rate
PVBU DN 50 N	507	stainless	PP / Stainless	50 l/min

**Spare parts:** grille, adaptor, sealing set-2pcs, stainless flange.

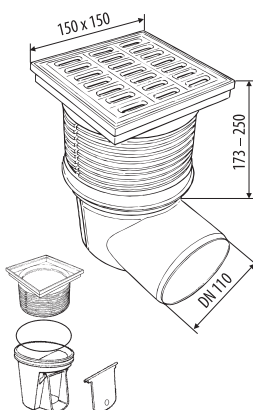


## BASEMENT DRAIN

For interior or exterior instalations. Top section can be shortened, horizontal outlet DN 110 odour stopper dry, includes instalation manual, class K3 – 300 kg.

Type	Order Nr.	Colour	Material	Flow rate
KVB DN 110 C	510	black	PP UV stabil	100 l/min

**Spare parts:** grille, sludge trap, odour stopper dry, wet, sealing ring.

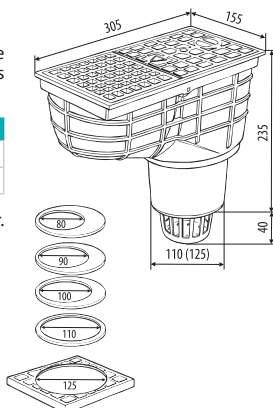


## RAIN DRUM

For rain inlet or for surface water. Contains insets for connection of rain inlet (diverse diameters) cover of rain inlet can be replaced by grille (surface water) contains instalation manual, class K3 – 300 kg.

Type	Order Nr.	Colour	Material	Flow rate
LSV DN 110 C	511	black	PP UV stabil	400 l/min
LSV DN 125 C	512	black	PP UV stabil	500 l/min

**Spare parts:** grille, sludge trap, cover, downpipe's cover, insets of downpipe's cover.

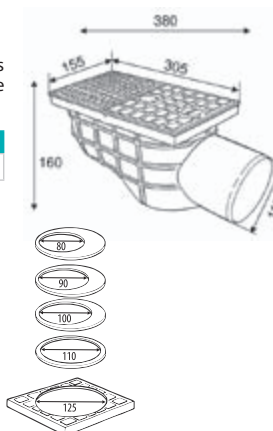


## RAIN DRUM — HORIZONTAL

For rain inlet or for surface water, horizontal outlet – less excavation depth, contains insets for connection of rain inlet (diverse diameters) cover of rain inlet can be replaced by grille (surface water) contains instalation manual, class K3 – 300 kg.

Type	Order Nr.	Colour	Material	Flow rate
LSVB DN 110 C	521	black	PP UV stabil	400 l/min

**Spare parts:** grille, cover, downpipe's cover, insets of downpipe's cover.



**new!** New product, starting in may 2010.



Colour and material of grilles:  
BLACK / POLYPROPYLEN, SILVER / INOX



INOX — Material is high quality stainless steel  
DIN 1.4301.



EUROPEAN UNION  
EUROPEAN REGIONAL DEVELOPMENT FUND  
INVESTMENT IN YOUR FUTURE

BULGARIA CROATIA CZECH REPUBLIC FRANCE GERMANY HUNGARY LATVIA LITHUANIA ROMANIA RUSSIA SLOVENIA SLOVAKIA UKRAINE

HACO, spol. s r. o.

Svobody 826/88, 460 15 Liberec 15, Czech Republic  
phone: +420 482 750 620, +420 482 750 621, fax: +420 482 750 619  
GSM: +420 604 203 541, e-mail: haco@haco.cz

www.haco.cz